

# Welcome HOME

We know that moving into a new area can be difficult. To help, we are providing a convenient list of telephone numbers for services you may need. If we can assist you with any additional information, please call the Leasing Center at 856-435-9200.

**IT WILL BE OUR PLEASURE TO HELP!**

## IMPORTANT INFORMATION

|                   |                        |              |  |
|-------------------|------------------------|--------------|--|
| • Telephone:      | Verizon                | 800-427-9977 | <a href="http://www.verizon.com">www.verizon.com</a>                           |
| • Electricity:    | Atlantic City Electric | 800-642-3780 | <a href="http://www.atlanticcityelectric.com">www.atlanticcityelectric.com</a> |
| • Gas Company:    | South Jersey Gas       | 888-766-9900 | <a href="http://www.pseg.com">www.pseg.com</a>                                 |
| • Cable TV:       | Comcast                | 609-634-9193 | <a href="http://www.comcast.com">www.comcast.com</a>                           |
| • US Post Office: | Lindenwold Post Office | 856-783-4861 | <a href="http://www.usps.com">www.usps.com</a>                                 |
| • Newspaper:      | Courier Post           | 856-435-9116 |  |

## EMERGENCY INFORMATION

|             |                              |              |
|-------------|------------------------------|--------------|
| • Police:   | Lindenwold Police Department | 856-784-4800 |
| • Fire:     | Lindenwold Board of Fire     | 856-346-0935 |
| • Hospital: | Kennedy Medical Center       | 856-346-6000 |

## SCHOOL INFORMATION

|               |                                   |              |  |
|---------------|-----------------------------------|--------------|--|
| • Elementary: | Lindenwold School #4              | 856-783-0301 | <a href="http://www.lindenwold.k12.nj.us">www.lindenwold.k12.nj.us</a> |
| • Middle:     | Memorial School-Lindenwold Middle | 856-346-3330 | <a href="http://www.lindenwold.k12.nj.us">www.lindenwold.k12.nj.us</a> |
| • High:       | Lindenwold HS                     | 856-741-0320 | <a href="http://www.lindenwold.k12.nj.us">www.lindenwold.k12.nj.us</a> |

## UNIVERSITIES & COLLEGES

|                      |              |  |
|----------------------|--------------|--|
| • Rutgers University | 732-932-4636 | <a href="http://www.rutgers.edu">www.rutgers.edu</a> |
| • UMDNJ              | 856-566-7050 | <a href="http://www.umdnj.edu">www.umdnj.edu</a>     |

## TRANSPORTATION

|                      |              |  |
|----------------------|--------------|--|
| • New Jersey Transit | 800-582-5946 | <a href="http://www.njtransit.com">www.njtransit.com</a> |
|----------------------|--------------|--|

## SHOPPING

|                                    |              |  |
|------------------------------------|--------------|--|
| • Deterding Market                 | 856-783-1457 |  |
| • Echelon Mall                     | 856-772-1950 |  |
| • Berlin Farmer's Market           | 856-767-1284 | <a href="http://www.berlinmarket.com">www.berlinmarket.com</a> |
| • Marlton Crossing Shopping Center | 856-983-8905 |  |

## SPORTS & ENTERTAINMENT

|                        |              |  |
|------------------------|--------------|--|
| • NJ State Aquarium    | 856-365-3300 | <a href="http://www.njaquarium.org">www.njaquarium.org</a>             |
| • LaMartinique Bowling | 856-783-0558 |  |
| • High Ridge Ice Arena | 856-346-2000 |  |
| • Camden Waterfront    | 856-757-9400 | <a href="http://www.camdenwaterfront.com">www.camdenwaterfront.com</a> |

## PLACES OF INTEREST

|           |              |  |
|-----------|--------------|--|
| • Ritz 16 | 856-770-0600 |  |
|-----------|--------------|--|

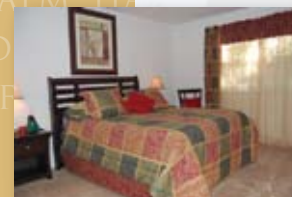
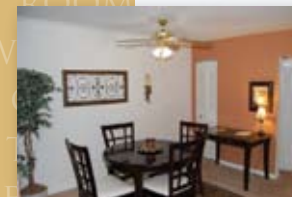
# Welcome HOME



550 BILPER AVENUE, APT 6811  
LINDENWOLD, NJ 08021

Phone: 856-435-9200

[www.morgan-properties.com](http://www.morgan-properties.com)



## DIRECTIONS:

295 to Exit 29. Turn left onto White Horse Pike (Rt 30). Proceed approx. 6 miles to United States Ave. Make left and travel 3 blocks to Crowland Ave. Make left and follow signs to leasing center.

## WELCOME TO THE PINES

The Pines is located in Lindenwold, NJ. Our property is situated on 37 beautiful acres. The Pines is close to shopping, an amusement park, and public transportation.

The Pines has 1 bedroom, 1 bedroom deluxe, and 2 bedroom apartment homes. These units include heat, hot water, and cooking gas. The apartments come with wall to wall carpeting, large and spacious closets, central air, dishwashers, and private entrances.



The area surrounding The Pines is filled with restaurants, malls, and recreational activities. If you desire staying fit, we have 2 gyms located about 10 minutes away as well as parks. We are 5 minutes away from Clementon Park and Splash World for the children. For those who like casinos and you are feeling lucky, hop on the casino train, which can be picked up at Lindenwold Patco, and go to Atlantic City.



Other amenities that we offer here at The Pines are window treatments and patios or balconies. You will also find an experienced office staff that would be happy to help you with all your needs. We have an experienced maintenance staff as well to help you with any repairs that you may need.

We at The Pines will do everything to make your move in and stay very enjoyable. Welcome home.

## APARTMENT FEATURES:

- 1 & 2 bedroom garden apartments
- Heat, hot water & cooking gas included
- Washer & dryer (select homes)
- Spacious rooms
- Wall-to-wall carpeting
- Individually controlled central air conditioning
- Dishwasher
- Choice of balcony or patio
- Ceiling fans

## COMMUNITY FEATURES:

- Close to schools
- Professionally landscaped grounds
- Private entrances
- Pets welcome
- On-site laundry care centers
- 24-hour emergency maintenance
- Professionally managed by Morgan Properties
- Minutes to Philadelphia & Atlantic City
- Convenient to neighborhood shopping

